

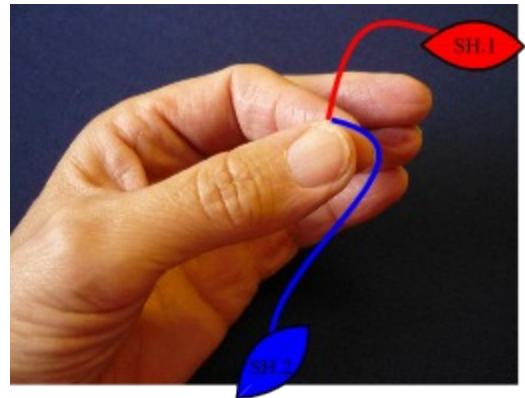
Clunys

Instructions and pictures - Jennifer Williams 6 - 2011

In these instructions the 'red' thread is used to make the warp threads of the loom and the 'blue' thread will be used to 'weave' the cluny.

1)

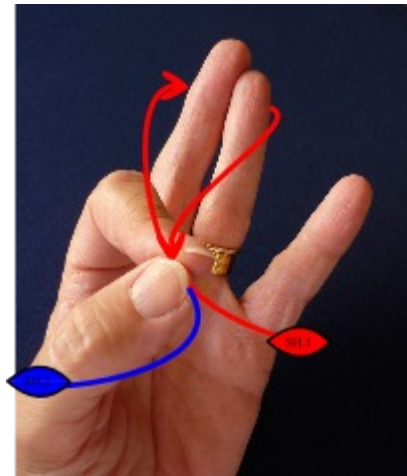
Drop **shuttle 2** (which will be weaving the cluny later) to the left out of the way and pick up **shuttle 1** to make the loom.



2)

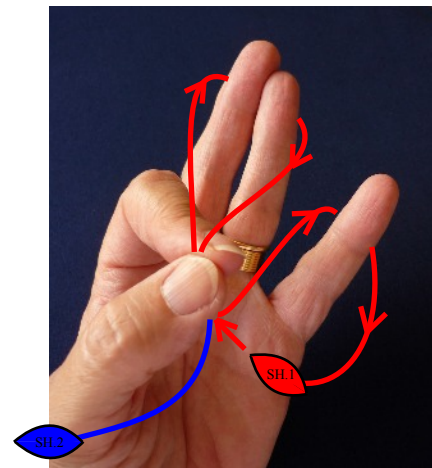
Take the thread from **shuttle 1** up round your 2nd and 'ring' fingers (clockwise) and bring it back downwards into the 'pinch' as in the Photo on the right.

NB the thread should form a 'loop' and **not** a 'ring'



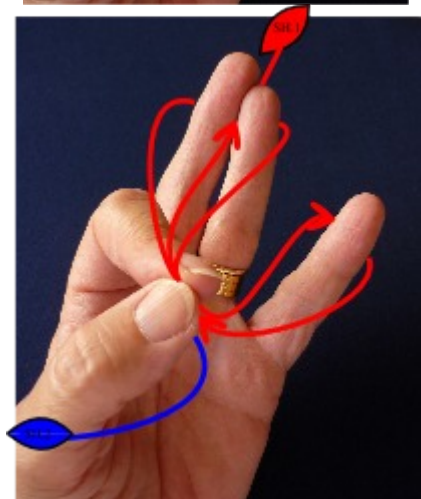
3)

Now take the **shuttle 1** thread down, round your little finger (clockwise) and back up again into the 'pinch'.



Take the **shuttle 1** thread between your 2nd and 'ring' fingers, and then you will have the three 'threads' on which to weave your cluny.

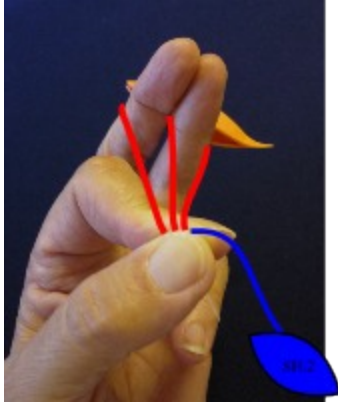
You will need to secure the **shuttle 1** thread to keep it taut; this you can do by winding it round your little finger a few times, but I find it easier to shorten the thread enough to hold **shuttle 1** in place just behind the 2nd and 'ring' fingers.



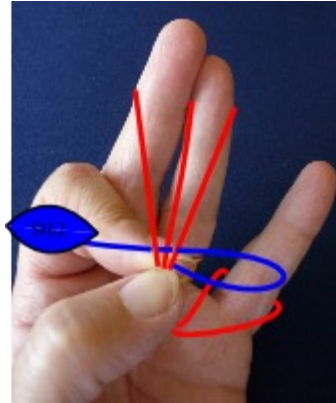
Weaving a Cluny

© (Photos and diagrams) 2011 Jennifer Williams

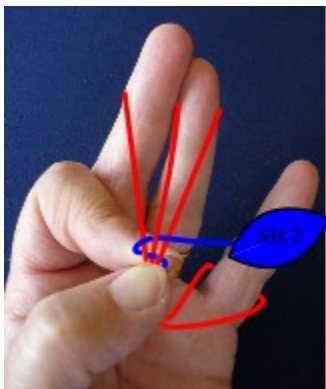
- 1) The warp threads of the loom, formed using **shuttle 1**, are held in place by shortening the thread so that the shuttle is held behind the 2nd and 'ring' fingers



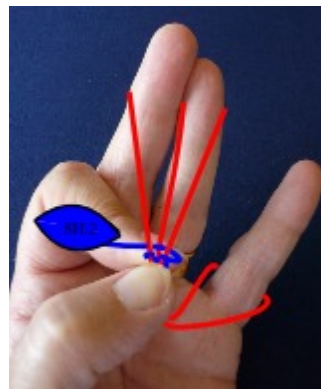
- 2) With **shuttle 2** weave from right to left under, over and under across the loom



- 3) Tension the **shuttle 2** thread then weave from left to right, over, under and over the loom



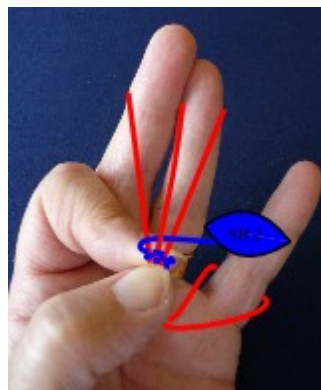
- 4) Tension the **shuttle 2** thread, then weave from right to left again as before



- 5) Tension the **shuttle 2** thread and weave from left to right again as before.

Shape the cluny by spreading out the warp threads of the loom as you weave and then bringing them closer together again for the last three or four 'wraps' of the cluny.

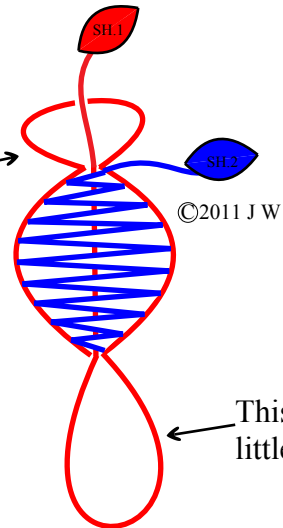
A 'wrap' is the term given for the dual action of weaving right to left and then left to right.



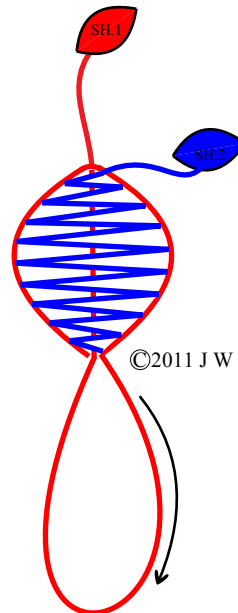
Closing a Cluny

1) Take the cluny off your hand

This is the loop that was round your second and 'ring' fingers



2) Slowly pull down on one side of the loop that was round your little finger - if shuttle 1 moves towards the cluny stop and pull down on the other side of the loop. You'll see that the loop that was round your second and 'ring' fingers will get smaller, then disappear. Stop as soon as this happens so as not to distort the shape of the cluny.



3) Pull **shuttle 1** upwards and this will close the loop at the bottom of the cluny

